



# ECOiso<sup>®</sup> NCF

NOISE CONTROL FLOOR



Image of NCF single unit (on the left) and NCF applied (ambient image).

## DESCRIPTION

ECOiso<sup>®</sup>NCF<sup>®</sup> is a sound insulation material composed by one sheet of Cork Agglomerate and one board of high-density recycled wood fibers. This material was thought in order to reduce transmission of sound and vibration in the floors of residential and commercial buildings. It can also be used on walls and ceilings.

The strength and durability added to the available dimensions of the ECOiso<sup>®</sup>NCF<sup>®</sup> make it ideally suitable for primary construction or retrofitting of existing applications. There is requirement for a sound insulation material that should be as thin as possible, in order to maximize the usable room areas.

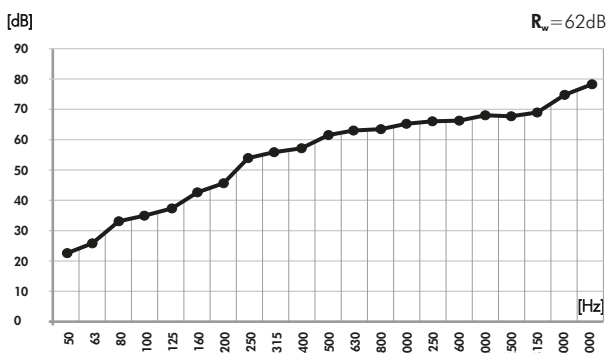
Beforetime the use of cork and wood agglomerates was one of earliest methods for building studios soundproofing insulation. It was soon discovered that these same excellent characteristics so essential in recording studios, could be applied equally well to home theatres, home studios, music rooms and many others.

ECOiso<sup>®</sup>NCF<sup>®</sup> has also proven effective over a wide sound frequencies range, giving the best noise reduction values at the low and high-frequencies in a single composite material.

## FEATURES

- 100% Recyclable and Natural raw-materials.
- Recycled raw-materials.
- Fire-resistance: OSB - Euroclass D-s1,d0 (similar to old M3) and Cork - Euroclass E (similar to old M4).
- Supplied in tiles, easy to install.
- Excellent anti-vibrate performance.
- Easily cut to adjust to room dimensions.
- Provided in two sizes: 48 X 48 cm or 96 X 48 cm.
- Suitable for primary construction or retrofitting.

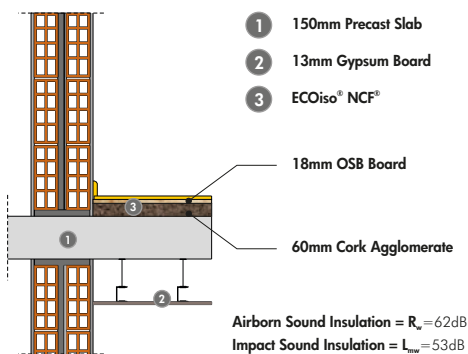
## AIRBORN SOUND INSULATION (dB/Hz)



## PACKAGE INFORMATION of 48 x 48 cm tiles

REFERENCE	PACKAGE DIMENSIONS	NR. OF TILES PER BOX
ECOiso <sup>®</sup> NCF486 - 60mm	1 Box - 62 x 62 x 36 cm	6 tiles (2,88m <sup>2</sup> )
ECOiso <sup>®</sup> NCF488 - 80mm	1 Box - 62 x 62 x 36 cm	4 tiles (1,92m <sup>2</sup> )

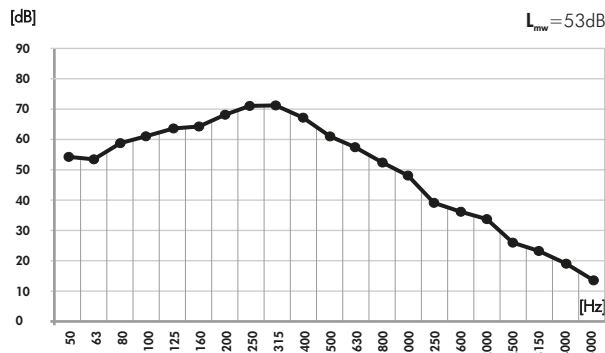
## APPLICATION EXAMPLE



## MODELS AND SIZES

MODELS	HEIGHT	WIDTH	DEPTH	WEIGHT
ECONCF968	96 cm	48 cm	8 cm	8.2 Kg
ECONCF966	96 cm	48 cm	6 cm	7.4 Kg
ECONCF488	48 cm	48 cm	8 cm	4.1 Kg
ECONCF486	48 cm	48 cm	6 cm	3.7 Kg

## IMPACT SOUND INSULATION (dB/Hz)



## PACKAGE INFORMATION of 96 x 48 cm tiles

REFERENCE	PACKAGE DIMENSIONS	NR. OF TILES PER BOX
ECOiso <sup>®</sup> NCF966 - 60mm	1 Box - 120 x 62 x 36 cm	6 tiles (5,76m <sup>2</sup> )
ECOiso <sup>®</sup> NCF968 - 80mm	1 Box - 120 x 62 x 36 cm	4 tiles (3,84m <sup>2</sup> )

## IMPORTANT NOTICES

- JOCAVI<sup>®</sup> accepts no responsibility for any printing errors. Specifications can be modified without prior notice, if technical or commercial reasons so require.
- The colours shown on this catalogue are only a reference and an illustration of the products finishing. The colours shown are not binding because brightness, contrast and colour balance may vary due to the printing process.
- Due to its natural origin, wood-based products will always present natural imperfections inherent to the organic nature. And for similar reasons, they will also present traces of old-age in the course of time.
- Wood and Fabric products are highly susceptible to change its appearance with humidity and temperature. Close attention must be paid to the storage conditions and the acclimatization before, during and after the installation.
- Typical Indoor Comfort Standards state a temperature range of 20°C - 27°C (68°F - 81°F), and a relative humidity of less than 60%. These would be considered as normal operational levels of JOCAVI<sup>®</sup> products' range.
- Despite all the standard sizes of all products, this model can be customised upon previous consultation. Sizes may vary slightly due to their production method and some inherent raw-materials characteristics.